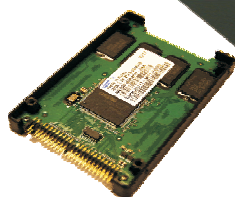
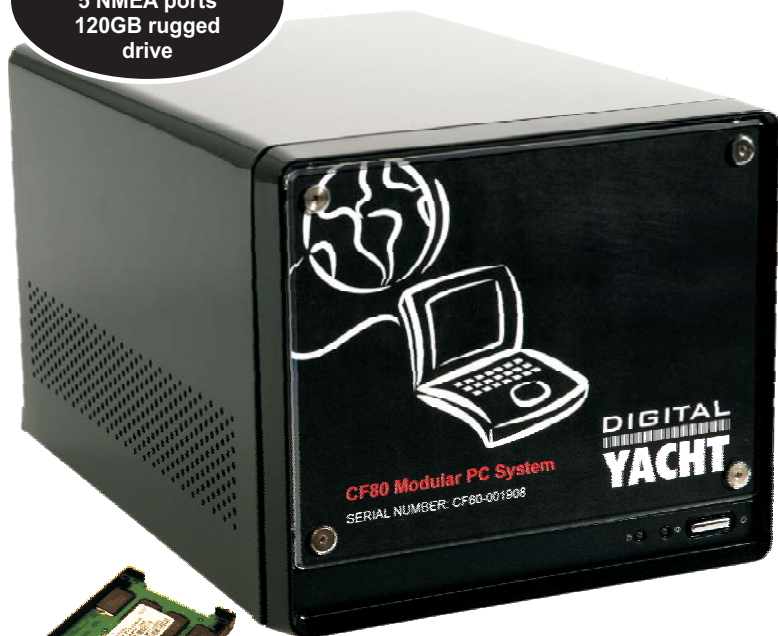


CF80 Value Marine PC System

Compact
12V DC Operation
5 NMEA ports
120GB rugged
drive

Powerful DC powered marine computer with 5 NMEA ports



The CF80 is also available with a 32GB solid state flash drive for the ultimate in reliability

The CF80 from Digital Yacht measures just 28 x 19 x 17 cm and runs directly from your 12V on board power system. It boasts a powerful Intel Dual Core processor, 1GB RAM and a ruggedised 120GB hard drive mounted in an anti vibration enclosure - ideal for the marine environment.

With its compact dimensions, the CF80 is small enough to fit on any boat but boasts a powerful Intel Dual Core E2160 processor, 1GB RAM and a ultra rugged 120GB hard drive. It's powered directly from your boat's 12V DC battery power with no complex and power hungry DC-AC inverter required.

The hard drive sits in a unique anti vibration enclosure to add further protection and an external CD/DVD drive is available - just plug into one of the 4 USB ports when you need this facility

The economics also make sense - with one product capable of offering navigation, communication and entertainment functions at an incredibly attractive price.

GPS105 GPS Sensor



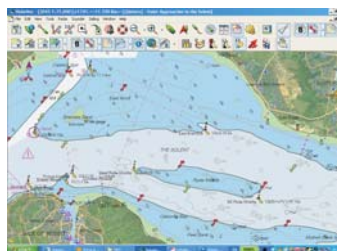
The optional GPS105 is a high performance 12 channel WAAS/EGNOS enabled GPS. Thanks to an advanced receiver, typical accuracies are 3-5m. It's the perfect GPS sensor for any PC based electronic charting or nav system and has a direct NMEA 0183 output. Also available is the GPS110 with a USB style connection

Plus, we've added all the connectivity you need with USB, Firewire/IEEE1394a, 5 x RS232/NMEA serial, 10/100/1000MB network, stereo sound and VGA monitor capability so your CF80 stays at the forefront of technology. Digital Yacht - serious technology and serious value!

Typical System Price
CF80 with 1GB ram and Win XP Home operating system. 120GB rugged hard drive, 5 serial ports DC power supply

RRP £799.95 Inc Vat

- Compact marine PC with powerful Intel dual core processor
- 12v DC direct operation - designed for fluctuating voltages encountered on board
- Measures just 28 x 19 x 17 cm
- 5 serial/NMEA ports pre-installed and configured for GPS, AIS, autopilot and instrument connections
- Full range of connectivity options including USB, IEEE1394, 10/100/1000 MB LAN and audio in-out.
- 1GB DDR 2 667MHz RAM expandable to 2GB
- 120GB ultra rugged drive supported in anti-vibration housing
- Built in Intel graphics for fast electronic charting presentation
- Matching range of LCD monitors, WIFI, software and accessories
- 2 year warranty



Navigation

Digital Yacht PCs are the ideal partner for popular electronic chart programs from Nobeltec, Raymarine, Maptech, Euronav, Furuno and Maxsea. We can pre-install charting software and electronic charts for an out of the box, plug and play solution. We've also solutions for radar, AIS, NMEA 2000 monitoring, satellite communications, on board e-mail and much more...

And Add Radar Too With Nobeltec....

The CF80 forms the ideal PC processor for Nobeltec's range of PC based radar and electronic charting systems. A 2kw 20" radar-plotter system starts from just £1495 inc vat turning your CF80 into a powerful multi function device. Call for catalogue



PROCESSOR:	Intel Dual Core E2160
MEMORY:	1GB 667MHZ DDR2
HARD DRIVE:	120GB rugged hard drive
OPTICAL:	Option via USB
GRAPHICS:	Onboard Intel GMA950 with DVMT - Utilises up to 224MB of on board memory
CONNECTIVITY:	5 X 9 pin serial 1 x Ethernet 10/100/1000MB 4 X USB 2 1 X 1394 1 X VGA
PHYSICAL:	KEYBOARD & MOUSE
OPTIONS:	SOUND IN/OUT (Stereo) 28 x 19 x 17cm MEMORY TO 2GB EXT HARD DRIVE TO 500GB

The CF80 is delivered with Windows XP Home operating system. Vista and XP Pro available as options

Specifications can change so please contact us prior to ordering